

POWERS / LOWENFELS GALLERY

53 STANTON STREET, NEW YORK, NY 10002

FOR IMMEDIATE RELEASE:

November 19, 2022

POWERS & LOWENFELS PRESENT, HERALD NIX & ROGER BROUARD: GILDED SPLINTERS

New York, NY — Steven S. Powers & Joshua Lowenfels are pleased to present, *Gilded Splinters*, paintings by Herald Nix and sculpture by Roger Brouard, November 25 - January 15, 2023. This is the inaugural New York City exhibition for both artists. Please join us for the opening reception, Friday, November 25, 6:00-8:00 pm

Herald Nix & Roger Brouard embrace the process—the journey as much as the destination. Finding and creating routes, acknowledging missteps along the way, and evidencing them as part of the finished work. They are interested in finding something new within something familiar, as we can often find more within boundaries than without.

Nix (b. 1951) makes daily trips to nearby Shuswap Lake, British Columbia, and uses the familiar landscape as a template for much of his work. Having the broad subject already set allows for the improvisation of oil paint onto his birch panel—an extemporaneous creation within a framework. Brushing, scraping, pushing impasto, and paint thinned out so that it seeps into the wood grain of the panel. Because Nix focuses on what develops on the board in front of him, he takes peripheral inspiration from the lake's air, light, and weather rather than faithfully recording the landscape. It is why his works always look fresh and remarkably never redundant.

On long flights to China, Brouard (b. 1946) would ink ideas for sculpture yet realized. The drawings are quietly mesmerizing—heavy, black sketchy lines, often with wite-out corrections and a keen sense of balance. Brouard is a master carpenter, but for his sculpture, he uses a saw as he uses a pen—his black-painted, cut plywood forms often have splintered edges and putty at the joints, similar to his inked jagged lines and wite-out drawings. His line has a hesitant fluidity—it is not effortlessly smooth—it allows us to see the process.

Nix and Brouard are each now over 70, and each had professional lives outside their artistic pursuits. It's not that art came later in life; it was always with them and helped with their professional objectives, Nix as a celebrated musician and Brouard as a carpenter and entrepreneur. It is only now that life has come to their art and has afforded them this time of more sustained focus.

We are honored to pair these artists in their inaugural New York exhibits.

The gallery is open Wednesday-Sunday 12:00-6:00 pm. To keep up to date on gallery features follow Steven S. Powers (@stevenspowers) and Joshua Lowenfels (@ployaarrrt) on Instagram.

Contact:

Steve Powers

STEVEN S. POWERS

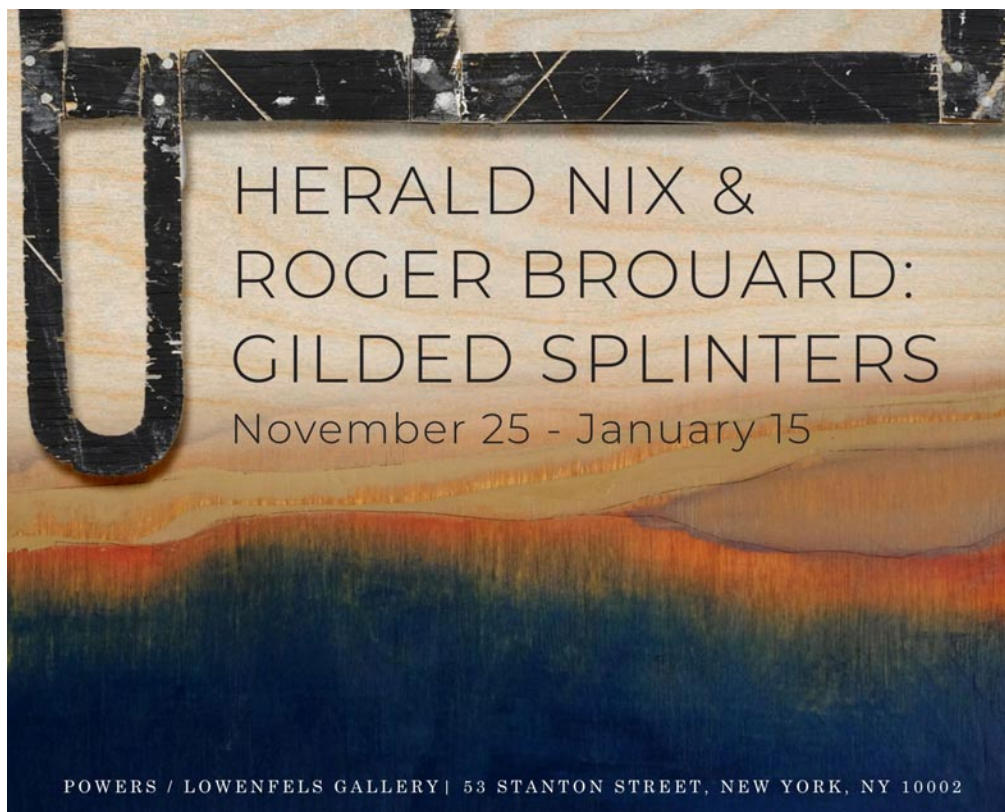
(c) 917-518-0809

(e) steve@stevenspowers.com

(w): stevenspowers.com

POWERS / LOWENFELS GALLERY

53 STANTON STREET, NEW YORK, NY 10002



Exhibition announcement combining Nix painting and Brouard sculpture.



Herald Nix (b. 1951) / Untitled, Shuswap Lake / Oil on panel / 2021 / 8 1/2" x 10 1/2" sight

POWERS / LOWENFELS GALLERY

53 STANTON STREET, NEW YORK, NY 10002



Roger Brouard (b. 1946) / Drift Plank ...Off Quaoody Head / Plywood & paint / 2020 / Size: 28" x 33.75"



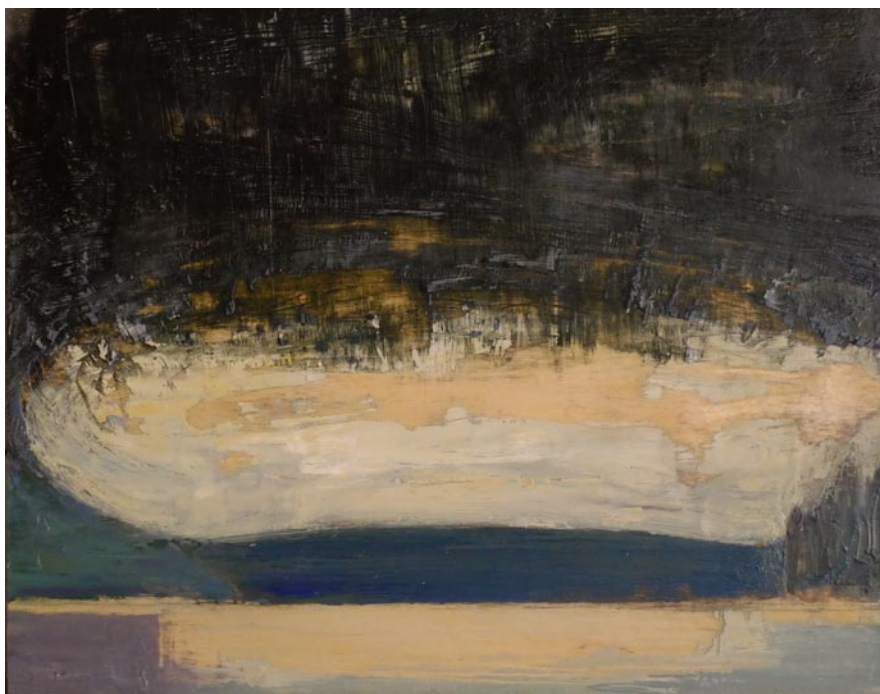
Roger Brouard (b. 1946) / Drift Plank...On Muscong Bay / Ink, Wite-Out & Gouache / 2019 / 7 1/2" x 9 3/4"

POWERS / LOWENFELS GALLERY

53 STANTON STREET, NEW YORK, NY 10002



Herald Nix (b. 1951)
Untitled, Shuswap Lake
Oil on birch panel
Circa: 2017
Size: 15" x 18 5/8"



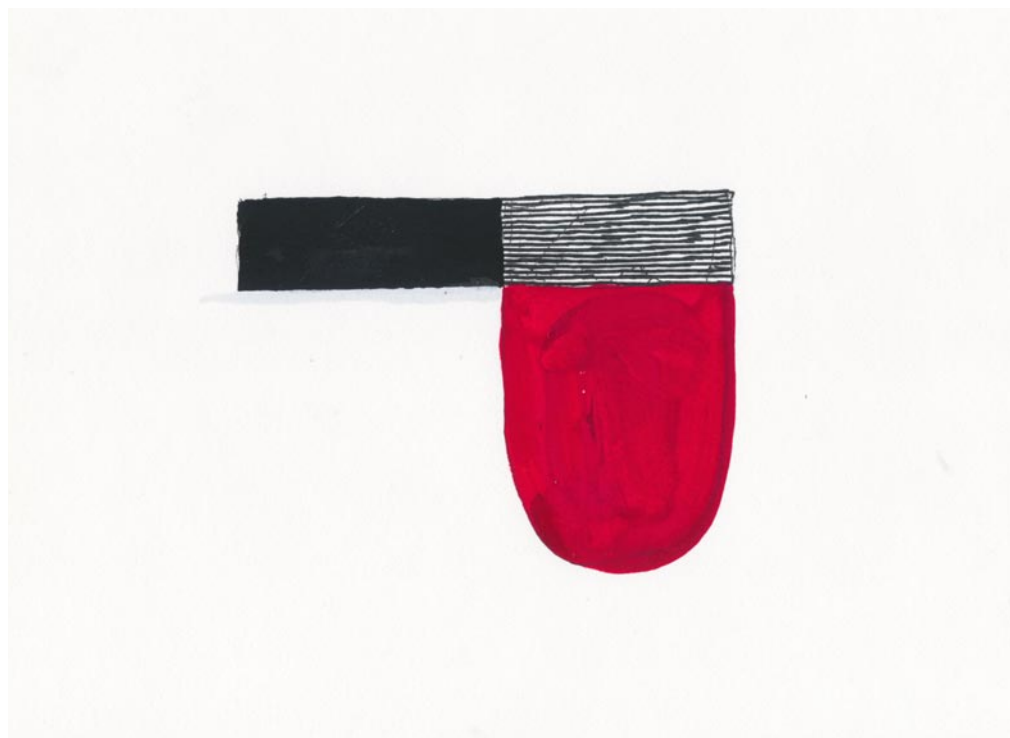
Herald Nix (b. 1951)
Untitled, Shuswap Lake
Oil on birch panel
Circa: 2020
Size: 8 1/2" x 10 1/2"

POWERS / LOWENFELS GALLERY

53 STANTON STREET, NEW YORK, NY 10002



Roger Brouard (b. 1946) / Off Shag Roost / Plywood & paint / 2021 / 16.5" x 23"



Roger Brouard (b. 1946) / N39 / Ink, Wite-Out & Gouache / 2019 / 7 1/2" x 9 3/4"